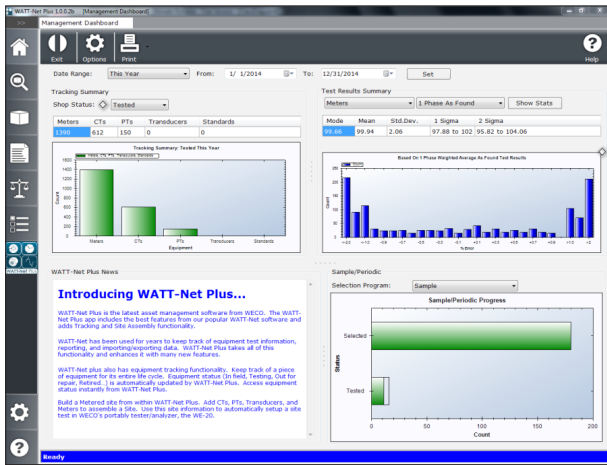


# METERING ASSET DEVICE MANAGEMENT SOFTWARE

# WATT-Net Plus™

**WATT-Net Plus™ is the most comprehensive asset management and integrated meter testing software solution in today's market.**

- ▶ Features full lifecycle management of all metering assets and seamless integration of all meter testing data.
- ▶ Leverages all the power of RADIANT or WECO NIST traceable hardware.



**Solutions** for everyday meter shop challenges may be further customized with WATT-Net Plus™ maximizing productivity:

- ▶ First Article Testing
- ▶ Sample/Periodic Testing
- ▶ Site Management
- ▶ RMA Tracking
- ▶ Function Testing Automation
- ▶ Advanced Custom Configuration

**Field and Shop Management:** Asset and device management is seamless with real-time field test equipment sync capabilities, online connectivity, and platform integration.

**Complete Integration:** The WATT-Net Plus™ system of record easily accommodates utility requirements for full integration with numerous platforms.

## WATT-NET PLUS INTEGRATION

### DEPLOYMENT METHODS:

- WATT-Net Plus System of Record
- WATT-Net Plus Bridge
  - Listener/API

### HEAD END SYSTEM ADAPTERS:

- Command Center

### MANUFACTURER ONLINE PORTAL

### SUPPORTED PLATFORMS:

- SAP®
- Maximo®
- MDM/ODM
- CC&B
- NISC
- CIS





# WATT-Net Software Features

*WECO Software Solutions serves every utility of every size!*

	WATT-Net Basic	WATT-Net Express	WATT-Net Limited	WATT-Net Plus
Manual Export of Test Data	●	●	●	●
Powerful Custom Reports	●	●	●	●
Dynamic Sequencing	●	●	●	●
Barcode Scanning and Printing	●	●	●	●
New Meter Support	●	●	●	●
CTs, PTs, Transducers, and Standards	●	●	●	●
Manual Site Administration	●	●	●	●
Shop Administration	●	●	●	●
Field Data Upload	●	●	●	●
Harmonics Testing	●	●	●	●
Advanced Query Save and Recall	●	●	●	●
RM17 Test Result Import	●	●	●	●
Two-way Field and Shop Synchronization	●	●	●	●
Power Quality Capture	●	●	●	●
Site Wiring/Multiplier Verification	●	●	●	●
Configurable Manufacturer File Import	●	●	●	●
Energy Reading Sets with Validation	●	●	●	●
WECO Legacy Data Conversion	▲	▲	▲	▲
AMI Device Installation History		●	●	●
Manual Test Entry		●	●	●
Management Dashboard		●	●	●
Obsolete Device Tracking		●	●	●
Security Roles and Access Control		●	●	●
Photo/Document Store and Recall		●	●	●
Firmware and Program ID Version Tracking		●	●	●
Unlimited Equipment Sync		●	●	●
Centralized Database		●	●	●
Proxy Sync (Inter-node Sync)		●	●	●
Dataview Configuration Editors		●	●	●
Reference Standard Calibration Test Scheduling		●	●	●
Popup Comments		●	●	●
NISC Integration		▲	▲	▲
Workstation Alerts			●	●
Enterprise Integration			●	●
Advanced Reporting Filters			●	●
Shop Transformer Testboard Interfaces				
Purged Device Archive				
Automated Site Administration				

▲ *Optional modules available for purchase*

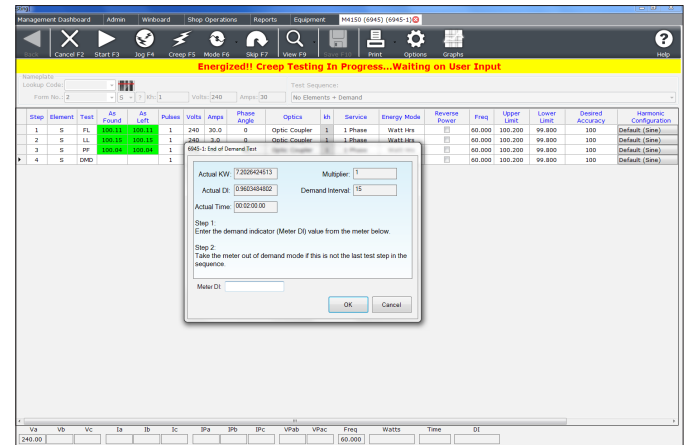
## WATT-Net Software Features Continued

	WATT-Net Basic	WATT-Net Express	WATT-Net Limited	WATT-Net Plus
Multiple AMI Device Support			●	●
RS933 Test Result Import			●	●
Integrated ANSI/MILSPEC Sampling & Reporting			●	●
Red Tag			●	●
Issued Device Tracking and Inventory			●	●
Standard Configuration Packages			●	●
Removal Reading Verification			▲	●
Field Standard and Instrument Tracking			▲	●
Device Repair Tracking			▲	●
Performance Tracking and Reporting			▲	●
Advanced Pallet Building and Transfer			▲	●
Evidence Locker Hold Enforcement			▲	●
Install Hold			▲	●
Company Number Reservation			▲	●
Meter Failure/Performance Reports			▲	●
Mass Retirement File Import			▲	●
Missing Device Support			▲	●
Field Assistant			▲	▲
Shop Assistant			▲	▲
Device Analytics Management			▲	▲
First Article Verification			▲	▲
No Meter Left Behind			▲	▲
Sample Testing Oversamples and Alternates			▲	▲
Failed In-Service Lot Tracking			▲	▲
Retired Device Archive			▲	▲
Automated Meter Burden Calculation & Reporting			▲	▲
Runtime Test Board Workstation			▲	▲
Network Device (Router/Collector/Radio) Support			▲	▲
In-Service Sample Management			▲	▲
New Device Acceptance			▲	▲
RMA Workflow, Tracking, and Reporting			▲	▲
Work Order and inventory Control			▲	▲
Function Testing Automation			▲	▲
Third Party Test Board Adapter			▲	▲
Gas Devices Support			▲	▲
EEL Gas Prover Integration			▲	▲
Third Party Test Import			▲	▲
Generic Device Support			▲	▲
Advanced Custom Configuration				●
Multiple Operating Company Support				▲

▲ Optional modules available for purchase

## WATT-Net Plus Features:

- ▶ Advanced AMI Management, Testing, and Configuration Functionality
- ▶ Meter Shop Customizable Management Capabilities
- ▶ Roles-based Administration provides control and Security
- ▶ Reporting (Listing, Counts, Statistics)
- ▶ New Device and Sample Management
- ▶ Sample/Periodic Test Management, Testing & Reports
- ▶ Device Configuration Management
- ▶ Site Management
- ▶ Equipment Editors
- ▶ Equipment and Device State Tracking
- ▶ Audit and Certification Traceability
- ▶ Business Rules Engine



**Device Support:** Electric revenue meters, reference standards, current transformers, potential transformers, and testboards are currently supported.



**Please contact your sales representative for additional information on WATT-Net Plus and other RADIAN or WECO software products and services.**

Radian Research, Inc.  
www.radianresearch.com

3852 Fortune Drive  
Lafayette, Indiana 47905

phone 765-449-5500  
fax 765-448-4614

