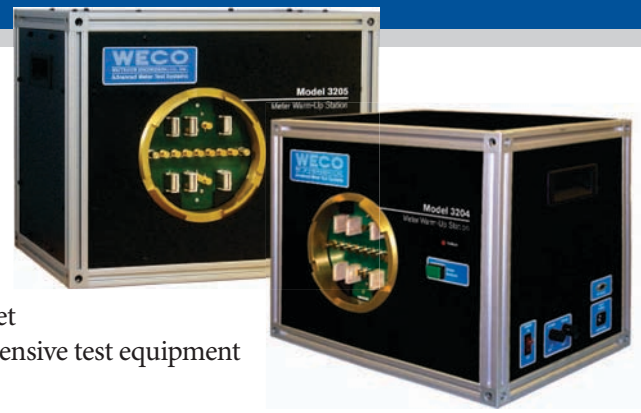


Models 3204 & 3205 Meter Warm-Up Stations



What do you do when an electronic meter is received, and you need to get the readings fast? Turn to your trusty Model 3204, of course! Why tie up expensive test equipment and personnel just to take readings?

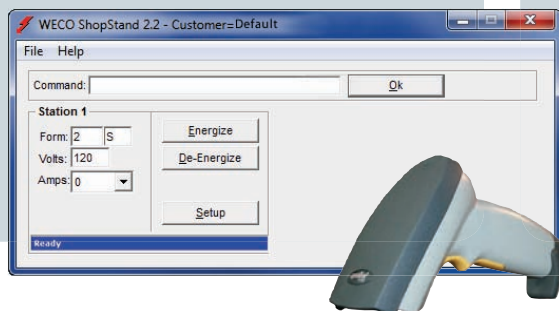
Low insertion force Smart Socket™ technology will automatically close the socket with meter insertion and release the meter with the push of a button. Control up to six WECO Meter Warm-Up Stations from one PC with the Windows® compatible ShopStand™ software. Use a barcode scanner to scan the meter label or manually enter the meter information and let the 3204 do the rest. The 3204 will route the voltage to the necessary positions supplying 120, 240 or 480 volts to the meter. The 3204's quiet operation and small footprint make it a perfect addition to your warehouse area. When you need to test that AMR device, there is no need to spend thousands of dollars on expensive equipment. The 3205 adds a left element current source to all the features of the 3204. Currents of 10, 40 or 50 amps make the 3205 a perfect way to verify AMR devices or power meters for long term Time-of-Use (TOU) verification.

Model 3204 Features:

- Input voltage:
120VAC at 2A
- Serial interface
- Smart Socket™ with minimal insertion force
- ShopStand™ software
- Select meter forms and configure proper voltage routing for meter forms checked by a barcode
- 120V, 240V or 480V
- Windows® compatible DLL provided
- Dimensions & Weight:
16.5"W x 13.5"H x 12.5"D, 55 LBS
- Warranty:
**Two (2) year limited warranty (all parts and labor).
Manufacturer warranty on optional computer.**

Optional Accessories:

- Forms 5A and 45A require a special A-base Adapters:
**>>Single-phase
>>Three-phase**
- Optional barcode reader with software
- Optional PC:
**Dell standard business class Mini Tower PC
Microsoft Windows® operating system**



Model 3205 Features:

- Input voltage:
120V single-phase
- Serial interface
- Smart Socket™ with minimal insertion force
- ShopStand™ software
- Select meter forms and configure proper voltage routing for meter forms checked by a barcode
- Model 3205 applies voltage and current
- 120V, 240V or 480V
- Model 3205 boasts selectable currents of 0, 10, 40, or 50A for left channel (no current source for center or right elements)
- Windows® compatible DLL provided
- Dimensions & Weight:
16.5"W x 13.5"H x 12.5"D, 60 LBS
- Warranty:
**Two (2) year limited warranty (all parts and labor).
Manufacturer warranty on optional computer.**

Optional Accessories:

- Forms 5A and 45A require a special A-base Adapters:
**>>Single-phase
>>Three-phase**
- Optional barcode reader with software
- Optional PC:
**Dell standard business class Mini Tower PC
Microsoft Windows™ operating system**